



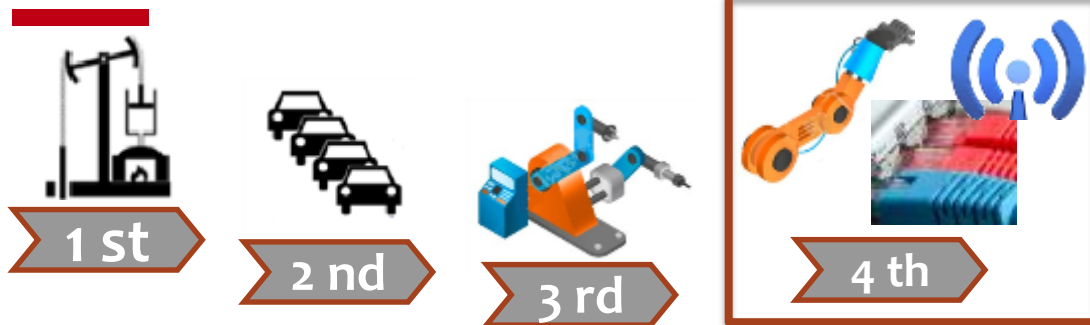
ASSOMAC

NATIONAL ASSOCIATION MANUFACTURERS
OF FOOTWEAR, LEATHERWOODS
AND TANNERY TECHNOLOGIES

Targa Verde; incontri di zona novembre 2018



INDUSTRY background



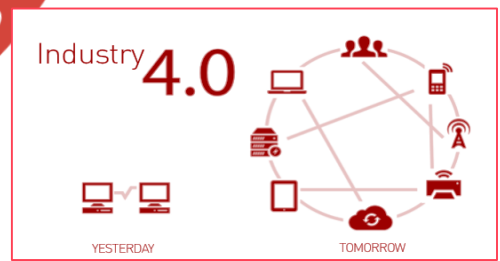
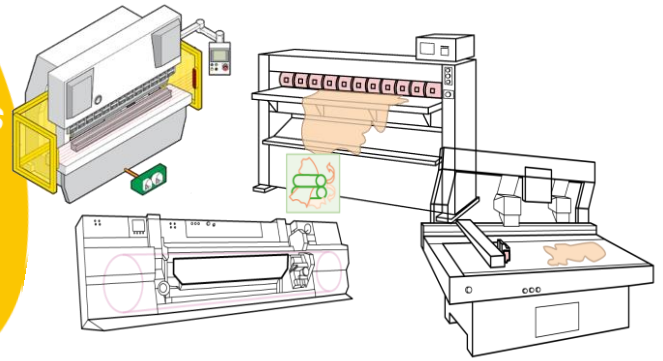
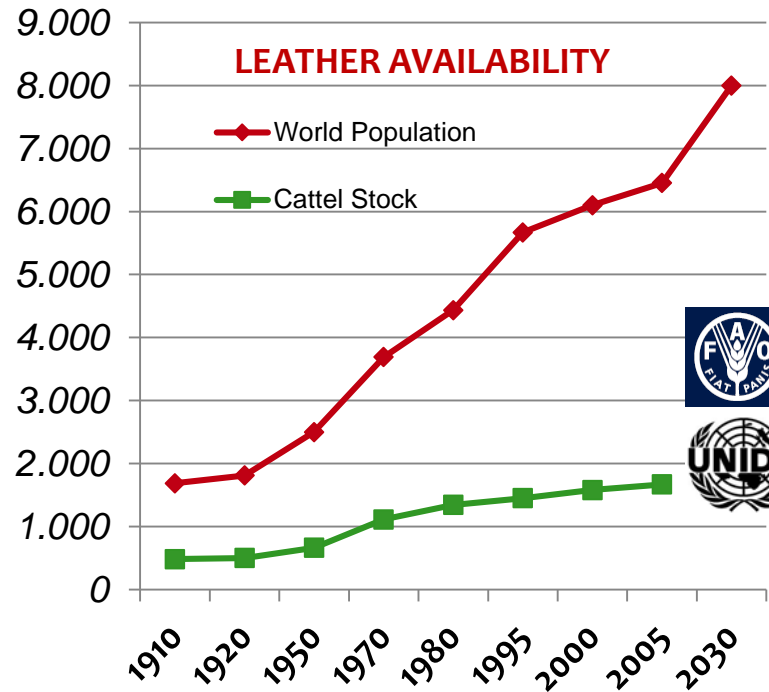
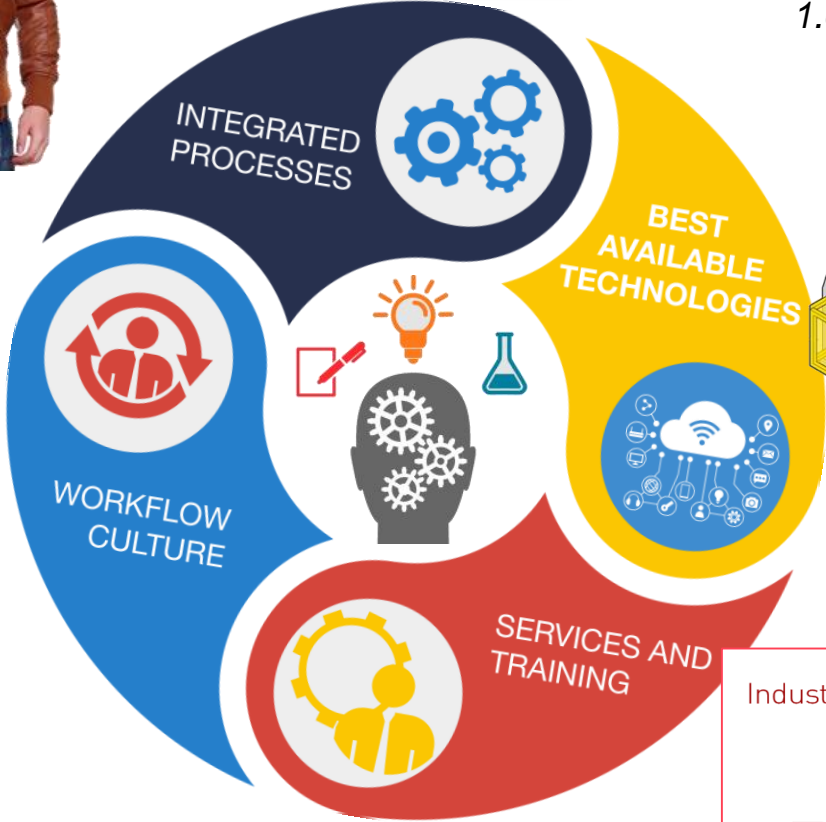
INDUSTRY 4.0



MANAGEMENT POLICY



TECHNOLOGY for quality

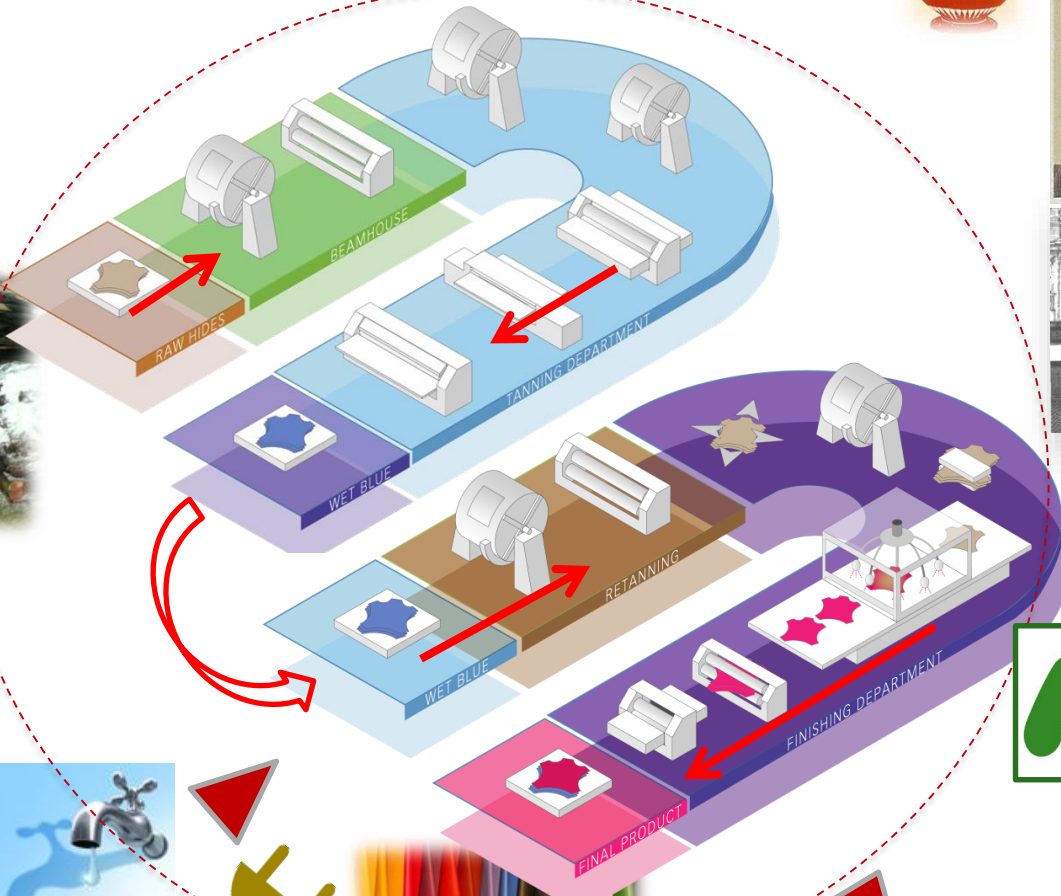




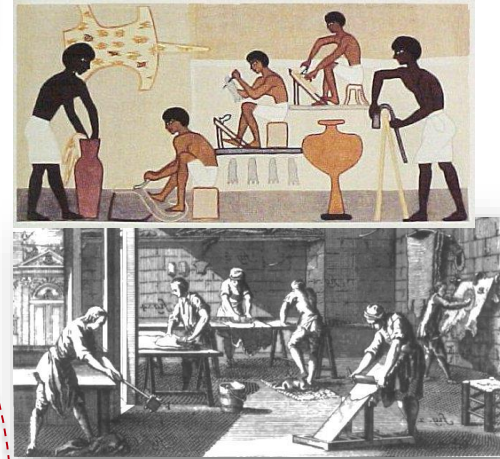
GMP in tannery...



1000



...TANNING...
historically oldest
recycling process



300

30-40 m3 waste water
 450-550 Kg solid waste
 200 – 250 kg COD
 80-100 kg BOD



Evolution...

ieri




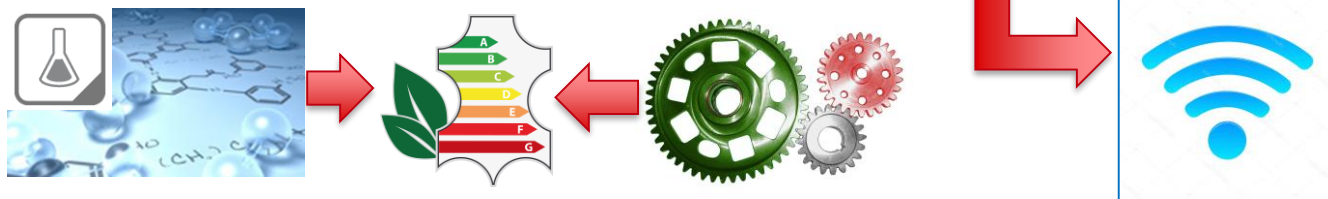
oggi



domani



	XXXX	XX	?X
	XX	XXXx	?X
	Xx	XXX	?X



Correlation...



**I
N
D
U
S
T
R
Y
4.0**

I ntuitive interface
N etworking into process chain
D ata exchange/communication
U ser friendly, reproducible
S erviceable, predictive maintenance
T raceability of productions
R obotic facilities
Y ield/performance and quality

=

**S
U
S
T
A
I
N
A
B
L
E**



CONSTRAINT:

- Restriction; regulations (REACH)
- Product requirements; (BRAND/OEM)



CONSUMES:

- Water preservation
- Treatment and recycling



CLIMATE CHANGE :

- Process efficiency
- Carbon footprint



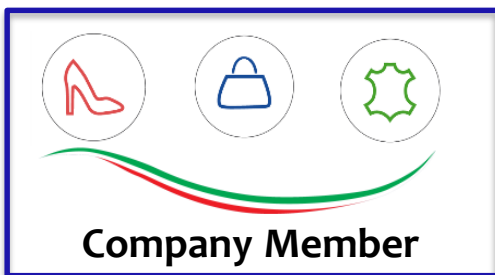
COMMUNITY:

- ❖ Labor (risk assessment)
- ❖ Social (Circular Economy)





VOLUNTARY LABELING



ATTESTATO DI CONFORMITÀ STATEMENT OF CONFORMITY

RINA SERVICES S.p.A., sulla base delle valutazioni condotte, attesta che
RINA SERVICES S.p.A., on the basis of the assessments carried out, declares that

il processo di rilascio della targa verde "Green Label"
the process for the issue of the "Green Label"

predisposto dall'organizzazione
drawn up by the organisation

ASSOMAC
Associazione Nazionale dei Costruttori di Macchine e Tecnologie per il Settore Pelle
Via Matteotti, 4/a – 27029 VIGEVANO (PV)

è conforme ai requisiti del seguente documento di riferimento
complies with the requirements of the following reference document

Regolamento di Attuazione del progetto "Supplier of Sustainable Technologies" Ottobre 2017
Project Implementation Rules "Supplier of Sustainable Technologies"
October 2017

In allegato è riportato l'elenco delle organizzazioni aderenti al progetto e l'indicazione di quelle oggetto di campionamento

The list of companies participating in the project and those sampled can be found in the attachment

Il certificato sarà oggetto di revisione ogni qualvolta durante le verifiche di sorveglianza, il campione sarà esteso ad ulteriori organizzazioni
The certificate will be subject to amendment whenever, during the surveillance audits, the sample is extended to cover additional organisations

Data di rilascio/Date of issue: 21/12/2017

Data di emissione corrente/Date of current emission: 21/12/2017

Laura Severino
Sustainability & Climate Change Manager

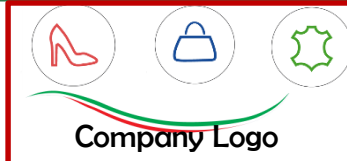


CARBON footprint:

- Process efficiency
- Impact on climate change

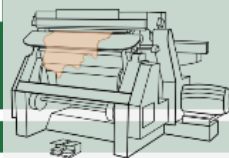


GREEN LABEL OF



PRODUCT DESCRIPTION

Commercial name:
Product type:



WORK CYCLE

Short process description:



Processed material:

ENERGY/ENVIRONMENTAL PERFORMANCES

Installed power:	} kW	
Electrical energy consumption:		
Thermal energy consumption:		
Compressed air consumption:		Nm ³
Sound emissions:		dB(A)

BOUNDARY CONDITIONS

Location country:
Up-to-date data collection (Year): 20XX

CARBON FOOTPRINT
kg of CO₂ eq./Upper pair

Y,XXX



The Carbon Footprint value refers only to the real use of the machine / plant (production and end-of-life phases of the machine / plant are not considered) and measured through Life Cycle Assessment methodology

CARBON FOOTPRINT
N.A. kg of CO₂ eq./Upper pair
Previous Green Label

**L.C.A.
methodology**



WATER footprint:

- Water preservation
- Treatment and recycling



INDUSTRIAL MANUFACTURING

ISO 14046 STANDARD - WATER FOOTPRINT VERIFICATION



water footprint network

<http://waterfootprint.org/en/about-us/>



COMMUNITY



European Standards are under the responsibility of the European Standardisation Organisations ([CEN](#), [CENELEC](#), [ETSI](#)) and can be used to support EU legislation and policies.



COMMUNITY:

- ❖ Labor (risk assessment)
- ❖ Social (Circular Economy)



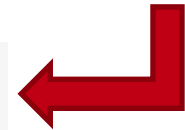
- any industrial organization should:*
- **SAFETY MANAGER**
 - **SERVICE OF EMERGENCY**
 - **RISK ASSESTMENT DOCUMENT,**
 - **TRAINING and INFORMATION**
 - **MEDICAL ADVISE SERVICE**





CONSTRAINT:

- Restriction; regulations (REACH)
- Product requirements; (BRAND/OEM)



ZDHC About Programme Academy Gateway Contributors News Join Events Login

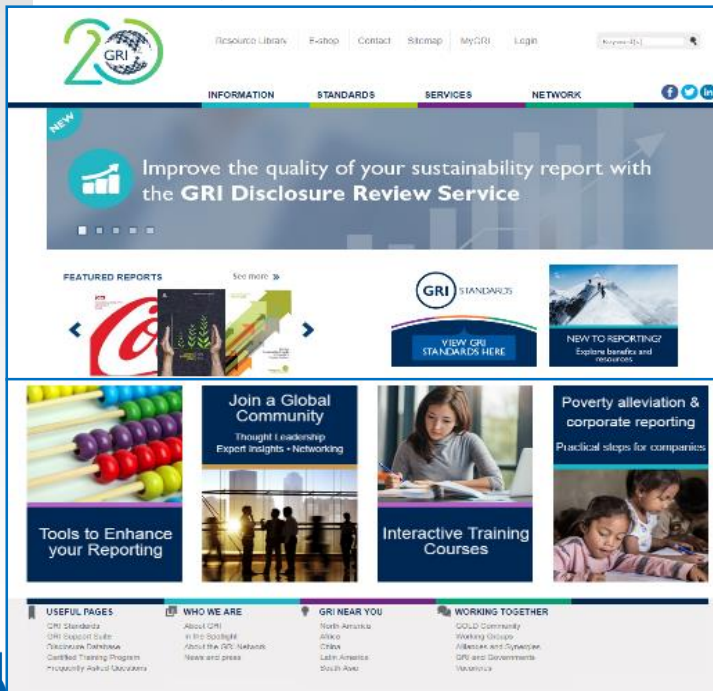




Sustainability balance...

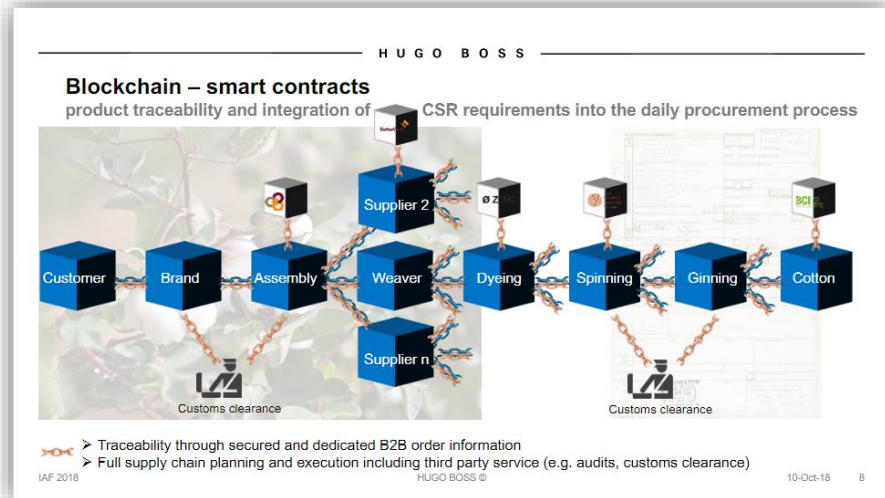
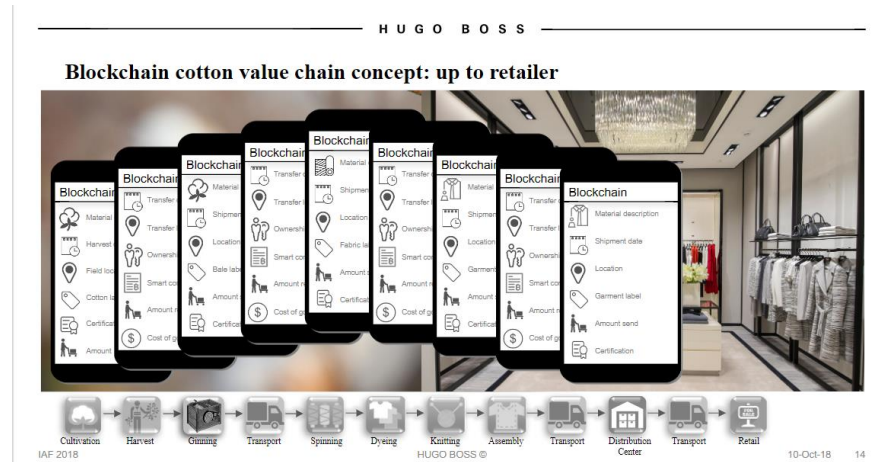
The Global Reporting Initiative (known as GRI) is an international independent standards organization that helps businesses, governments and other organizations understand and communicate their impacts on issues such as climate change, human rights and corruption.

<https://www.globalreporting.org>



La tecnologia Blockchain

via per migliorare la gestione delle supply chain e, con l'uso di contratti smart, si può essere sicuri che i vari fornitori stiano rispettando i loro doveri; questo è un sistema globale che ha l'obiettivo di promuovere la trasparenza e può potenzialmente trasformare la Supply Chain.





Green Label



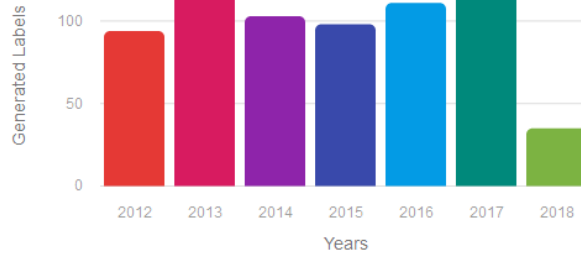
Dashboard

Machines

Messages

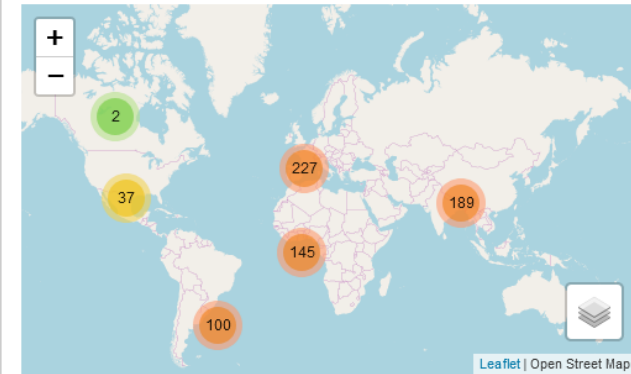
Dashboard

Label Trend



Month Year

Installations Map



Green Label



Dashboard

Machines

Messages

Green-Label Download 2018216ZcjdJ

Green Label

Green Label for G1 130 LW2

2018216ZcjdJ

Turkey (6 days ago)

Carbon Footprint: kg 0.58 of CO₂ Eq/kg processed material

[Green-Label](#) [Report](#) [Logos](#)

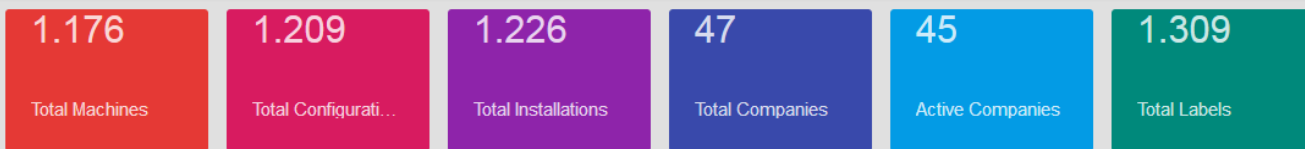


SUPPLIER OF SUSTAINABLE TECHNOLOGIES

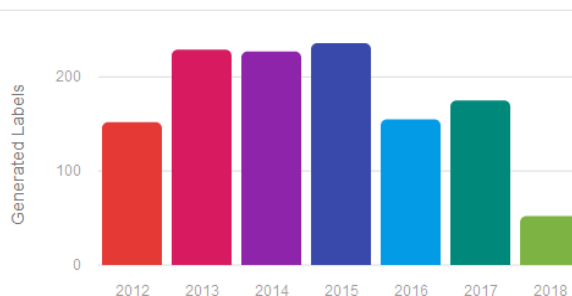
Administration

- Dashboard
- All Companies
- My Company
- Agenda
- Logs
- Messages
- Trash

Admin Agenda



Label Trend



Installations map



Recommended goals¹: stabilization at +2.0-2.4°C; emission reduction in 2050 by -50 to -85% compared to 2000

Sources¹: IPCC (Intergovernmental Panel on Climate Change), 4th Assessment Report, 2007; Synthesis Report, Climate Change Conference, 2009.

42 member companies

220,000 tons CO2 eq. avoided emissions

Green Label technologies consume 27% less water and 30% less energy

